



Education Scrutiny

6 February 2019

Council's evolving
relationships with schools
and colleges



Evolving ways of working

Roles of a local authority

1. Champion

- Moral purpose and democratic mandate for good outcomes; establish compelling vision; educational transformation

2. Convener

- Bring leaders together, connecting best practice and sharing good practice within, between and beyond the system; facilitate partnerships

3. Commissioner

- Working collaboratively to bring the strategic picture to reality, data, enabling and commissioning the system

Working in collaboration and partnership is key to the success for our schools and colleges



Key School/College Partnerships

- Local Associations
 - Oxfordshire Secondary Schools Headteacher Association (OSSHTA); Oxfordshire Association of Special School Headteachers (OASSH); Oxfordshire Governors Association (OGA)
 - Currently there is no Oxfordshire Primary Headteacher Association. Plans are in process to restart this group
- Oxfordshire Strategic School Partnership (OSSP)
 - The board brings partners together to promote the development of sustainable school to school support and identify key priorities to benefit all schools in the county
- Teaching Schools
 - Oxfordshire Teaching School Alliance (OTSA); Special School Teaching Schools



Local Strategic Positioning

- OSCB/CTB/Education Scrutiny
 - Children and Young People’s Plan
 - Children Missing Education
- Learner Engagement
 - Inclusion
 - SEMH
 - Early Help
- SEND
 - Written Statement of Action
 - Local First Approach
- Feedback
 - Schools
 - Forums
- All of which led to a.....

Be successful:
Increasing school attendance

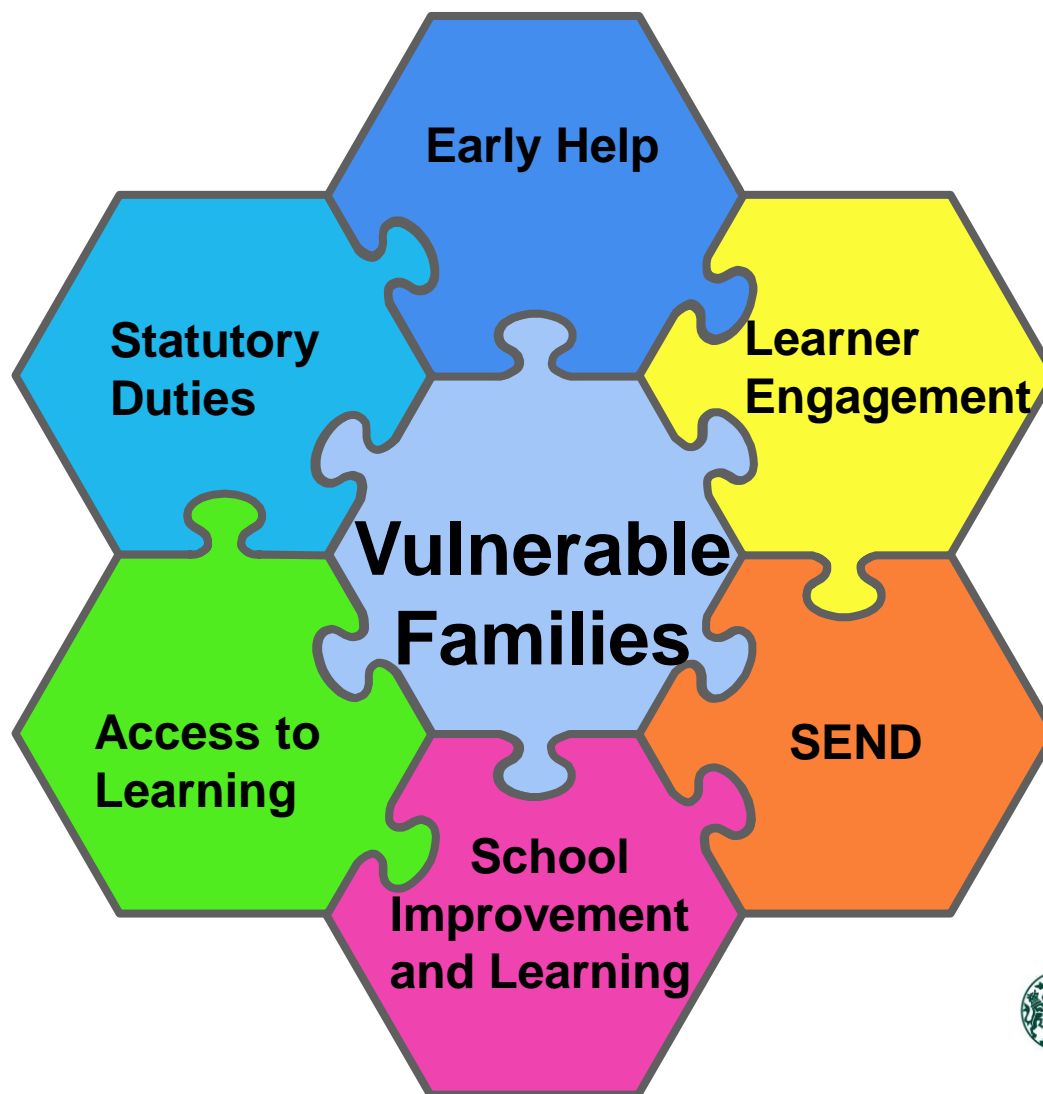
Be healthy:
Helping early, supporting prevention

Be safe:
Safely reducing the number of looked after children and managing demand

Be supported:
Improving the confidence and capability of the whole workforce



Local vision on vulnerable families





Education Teams

- Access to learning
- Learner Engagement
- SEND
- School Improvement and Learning



Access to Learning

Allyson Milward
Head of Access to Learning
07733 003540

Neil Darlington
School Admissions and
Transport
07393 001242

Barbara Chillman
School Place Planning
07554 103418

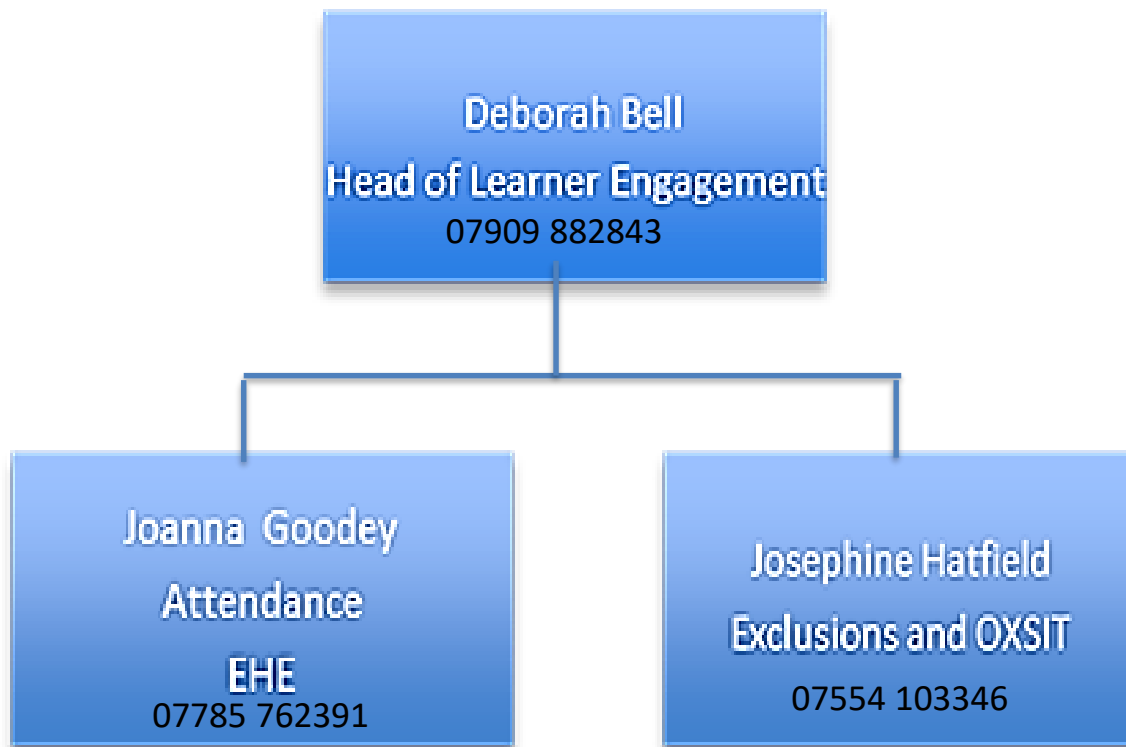
Kevin Griffin
School Organisation and
Planning
07733 003550

Deborah Rouget
Early Years and Access
07554 437472

Vacant
Academies Manager



Learner Engagement





SEND



Jayne Howarth
Head of SEND
07776 996944

Joanna Jones
SENSS Manager
07769 876311

Hester Collicutt
Casework Manager
07768 604262

Wendy Cliffe
SENDIASS Manager
07795 222168

Catherine Roderick
Principal Educational
Psychology
07825 274103



School Improvement and Learning

